



Flight Plan & Site Survey

Created using **RPAS Wilco®**

Operation Name:

Mission 01-21-2023

Pilot Name:

[REDACTED]

Pilot Certificate:

[REDACTED]

Flight Start:

January 21, 2023 6:35 PM

Flight End:

January 21, 2023 8:35 PM

Flight Area (Latitude):

49° 5' 27.90" N (49.091)

Flight Area (Longitude):

122° 44' 55.90" W (-122.749)

Altitude - Radius:

Alt: 600 ft - Rad: 740.8 m (0.4 nm)

Airspace:

UNCONTROLLED

FIR - Contact:

CZVR - 604-586-4500

Weather:

3.1 Celsius - Rain, Partially cloudy

Please ensure you received all required authorizations prior to flight.

Disclaimer

This Site Survey was created using RPAS Wilco by AIM Robotics. The flight plan contained is intended only for RPAS flights on the date/time and location specified. The user accepts all responsibility for the accuracy and completeness of the information contained.

For the complete Terms & Conditions, see

<https://rpaswilco.com/#/tnc>

Included

Site Survey

Obstacles (if available)

Nearby Aerodromes

Canadian Aviation Regulations

GFA

Aerodrome Supplements

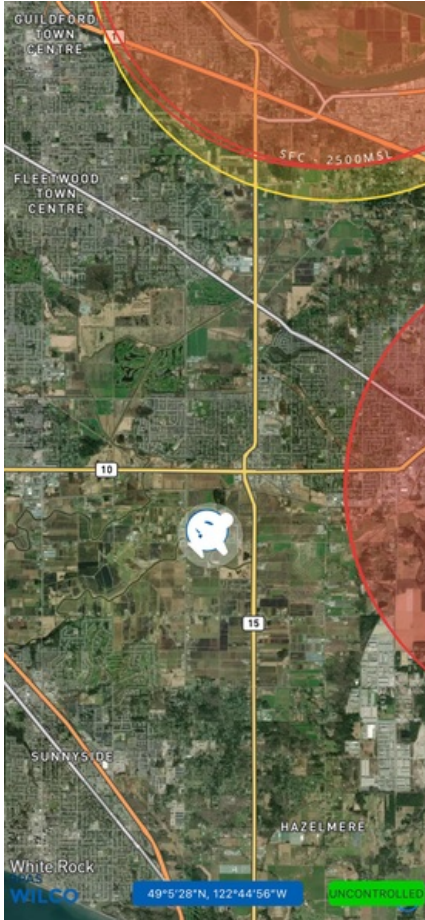
METAR & TAF (if available)

NOTAMs



CFS



Flight Map



MAP Details

	Latitude	Longitude
 MODEL	49° 5' 27.90" N (49.091)	122° 44' 55.90" W (-122.749)
 Pilot	49° 5' 31.50" N (49.0921)	122° 44' 59.50" W (-122.7499)



Airspace Classification



Overlying Airspaces

Class	Name	Floor	Ceiling
E	V342 Airway	2200AGL	12500MSL
B	V342 Airway	12500MSL	18000MSL
E	Pitt Meadows, BC CAE	1500MSL	12500MSL
B	Pitt Meadows, BC CAE	12500MSL	18000MSL
E	V11 Airway	2200AGL	12500MSL
B	V11 Airway	12500MSL	18000MSL
E	T775 Airway	2200AGL	12500MSL
B	T775 Airway	12500MSL	18000MSL
E	B22 Airway	2200AGL	12500MSL
B	B22 Airway	12500MSL	18000MSL
E	V300 Airway	2200AGL	12500MSL
B	V300 Airway	12500MSL	18000MSL
C	Vancouver, BC TCA	2500MSL	4500MSL
C	Vancouver, BC TCA	4500MSL	6500MSL
C	Vancouver, BC TCA	6500MSL	8500MSL
C	Vancouver, BC TCA	8500MSL	9500MSL
C	Vancouver, BC TCA	9500MSL	12500MSL
B	Vancouver, BC TCA	12500MSL	18000MSL
E	T611 Airway	2200AGL	12500MSL
B	T611 Airway	12500MSL	18000MSL
E	T629 Airway	2200AGL	12500MSL
B	T629 Airway	12500MSL	18000MSL

Nearest Aerodromes & Distance from Operation

LANGLEY REGIONAL (CYNJ AERODROME/HELIPORT Cert)	Lat: 49.101 Long: 122.631	8.652 KM	4.67 NM
PITT MEADOWS (CAJ8 WATERDROME Reg)	Lat: 49.209 Long: 122.709	13.428 KM	7.25 NM
DELTA HERITAGE AIR PARK (CAK3 AERODROME Reg)	Lat: 49.079 Long: 122.938	13.84 KM	7.47 NM
PITT MEADOWS (CYPK AERODROME/HELIPORT Cert)	Lat: 49.216 Long: 122.713	14.133 KM	7.63 NM

Weather Information for Mission Day

Summary: Partly cloudy throughout the day with a chance of rain.

Condition	Temperature	Feels Like	Precipitation	Visibility	Cloud Coverage	Wind Speed	Humidity
Rain, Partially cloudy	3.1 Celsius	1.6 Celsius	84.0 %	14.4 Km	70.3 %	13.0 kph	91.2 %

Canadian Aviation Regulations

Division III — General Operating and Flight Rules

For full listing please visit <https://laws-lois.justice.gc.ca/eng/regulations/SOR-96-433/FullText.html#s-901.27>

Visual Line-of-sight

- **901.11 (1)** Subject to subsection (2) no pilot shall operate a remotely piloted aircraft system unless the pilot or a visual observer has the aircraft in visual line-of-sight at all times during flight.
- **(2)** A pilot may operate a remotely piloted aircraft system without the pilot or a visual observer having the aircraft in visual line-of-sight if the operation is conducted in accordance with a special flight operations certificate — RPAS issued under section 903.03.

Procedures

- **901.23 (1)** No pilot shall operate a remotely piloted aircraft system unless the following procedures are established:
 - **(a)** normal operating procedures, including pre-flight, take-off, launch, approach, landing and recovery procedures; and
 - **(b)** emergency procedures, including with respect to
 - **(i)** a control station failure,
 - **(ii)** an equipment failure,
 - **(iii)** a failure of the remotely piloted aircraft,
 - **(iv)** a loss of the command and control link,
 - **(v)** a fly-away, and
 - **(vi)** flight termination.
- **(2)** If the manufacturer of the remotely piloted aircraft system provides instructions with respect to the topics referred to in paragraphs (1)(a) and (b), the procedures established under subsection (1) shall reflect those instructions.
- **(3)** No pilot shall conduct the take-off or launch of a remotely piloted aircraft unless the procedures referred to in subsection (1) are reviewed before the flight by, and are immediately available to, each crew member.
- **(4)** No pilot shall operate a remotely piloted aircraft system unless the operation is conducted in accordance with the procedures referred to in subsection (1).

Site Survey

901.27 No pilot shall operate a remotely piloted aircraft system unless, before commencing operations, they determine that the site for take-off, launch, landing or recovery is suitable for the proposed operation by conducting a site survey that takes into account the following factors:

- **(a)** the boundaries of the area of operation;
- **(b)** the type of airspace and the applicable regulatory requirements;
- **(c)** the altitudes and routes to be used on the approach to and departure from the area of operation;
- **(d)** the proximity of manned aircraft operations;
- **(e)** the proximity of aerodromes, airports and heliports;
- **(f)** the location and height of obstacles, including wires, masts, buildings, cell phone towers and wind turbines;
- **(g)** the predominant weather and environmental conditions for the area of operation; and
- **(h)** the horizontal distances from persons not involved in the operation.

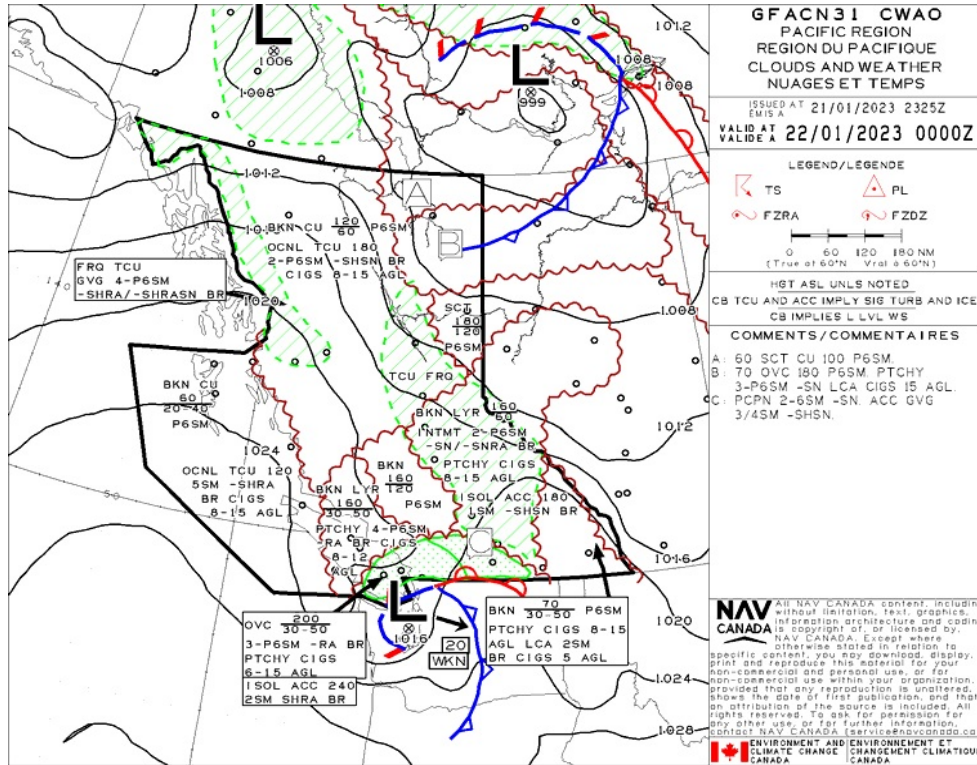
Operations at or in the Vicinity of an Aerodrome, Airport or Heliport

- **901.47 (1)** No pilot shall operate a remotely piloted aircraft at or near an aerodrome that is listed in the *Canada Flight Supplement* or the *Water Aerodrome Supplement* in a manner that could interfere with an aircraft operating in the established traffic pattern.
- **(2)** Subject to section 901.73 no pilot shall operate a remotely piloted aircraft at a distance of less than
 - **(a)** three nautical miles from the centre of an airport; and
 - **(b)** one nautical mile from the centre of a heliport.
- **(3)** No pilot shall operate a remotely piloted aircraft at a distance of less than three nautical miles from the centre of an aerodrome operated under the authority of the Minister of National Defence unless the operation is conducted in accordance with a special flight operations certificate — RPAS issued under section 903.03.

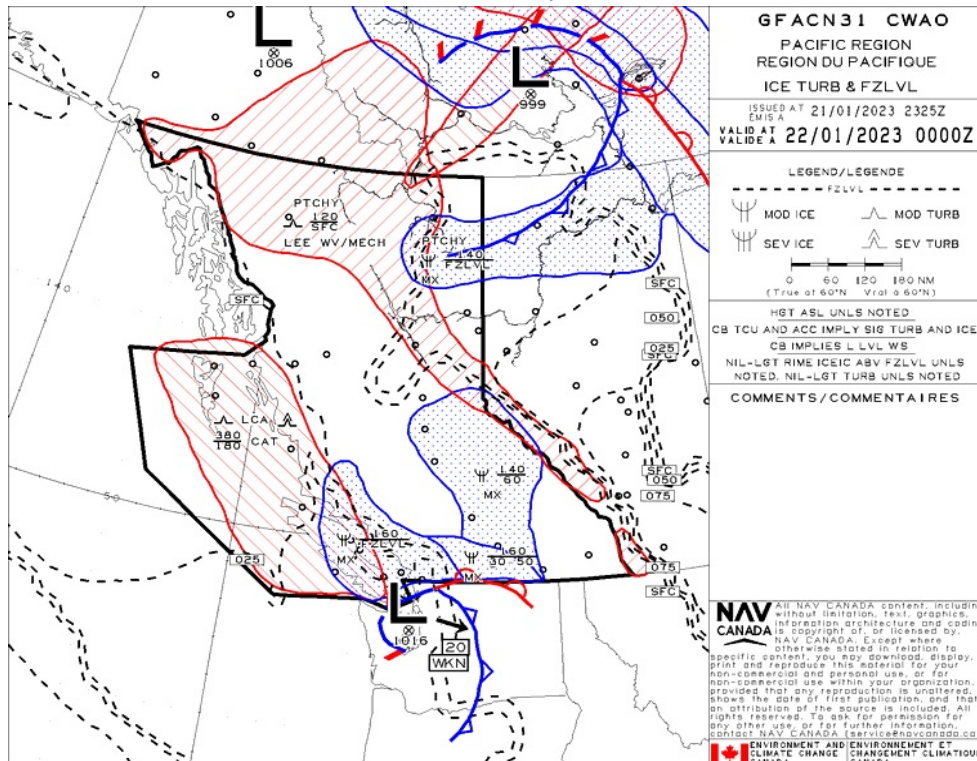
Records

- **901.48 (1)** Every owner of a remotely piloted aircraft system shall keep the following records:
 - **(a)** a record containing the names of the pilots and other crew members who are involved in each flight and, in respect of the system, the time of each flight or series of flights and
 - **(b)** a record containing the particulars of any mandatory action and any other maintenance action, modification or repair performed on the system, including
 - **(i)** the names of the persons who performed them,
 - **(ii)** the dates they were undertaken,
 - **(iii)** in the case of a modification, the manufacturer, model and a description of the part or equipment installed to modify the system, and
 - **(iv)** if applicable any instructions provided to complete the work.
- **(2)** Every owner of a remotely piloted aircraft system shall ensure that the records referred to in subsection (1) are made available to the Minister on request and are retained for a period of
 - **(a)** in the case of the records referred to in paragraph (1)(a), 12 months after the day on which they are created; and
 - **(b)** in the case of the records referred to in paragraph (1)(b), 24 months after the day on which they are created.
- **(3)** Every owner of a remotely piloted aircraft system who transfers ownership of the system to another person shall, at the time of transfer, also deliver to that person all of the records referred to in paragraph (1)(b).

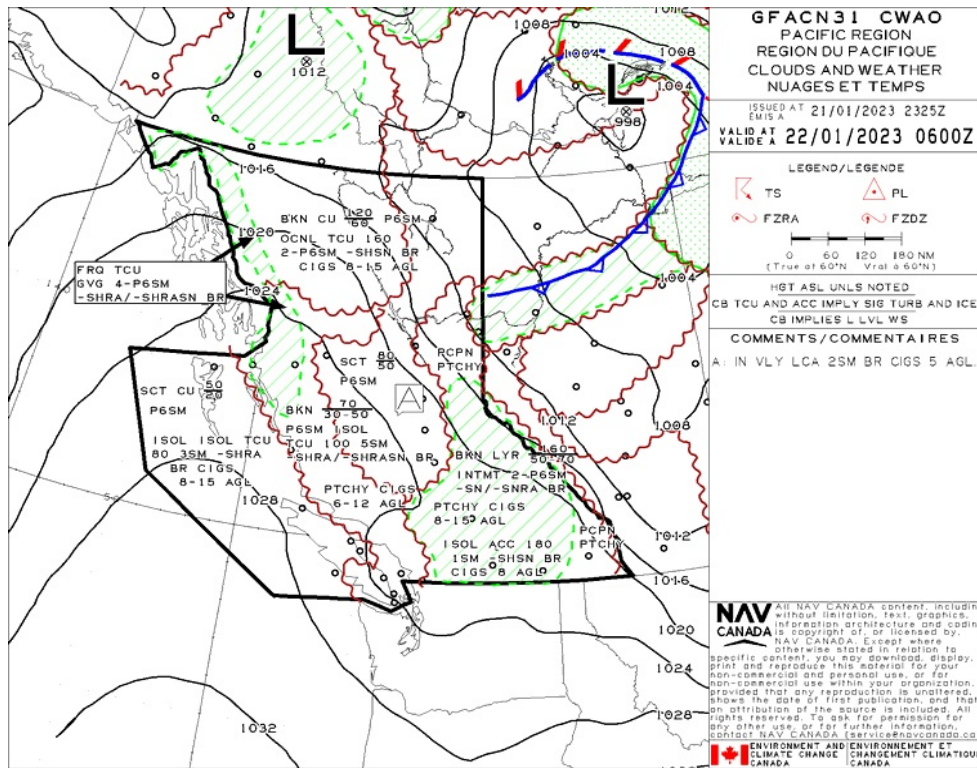
GFA Issue time + 00 hr - CLOUDS AND WEATHER



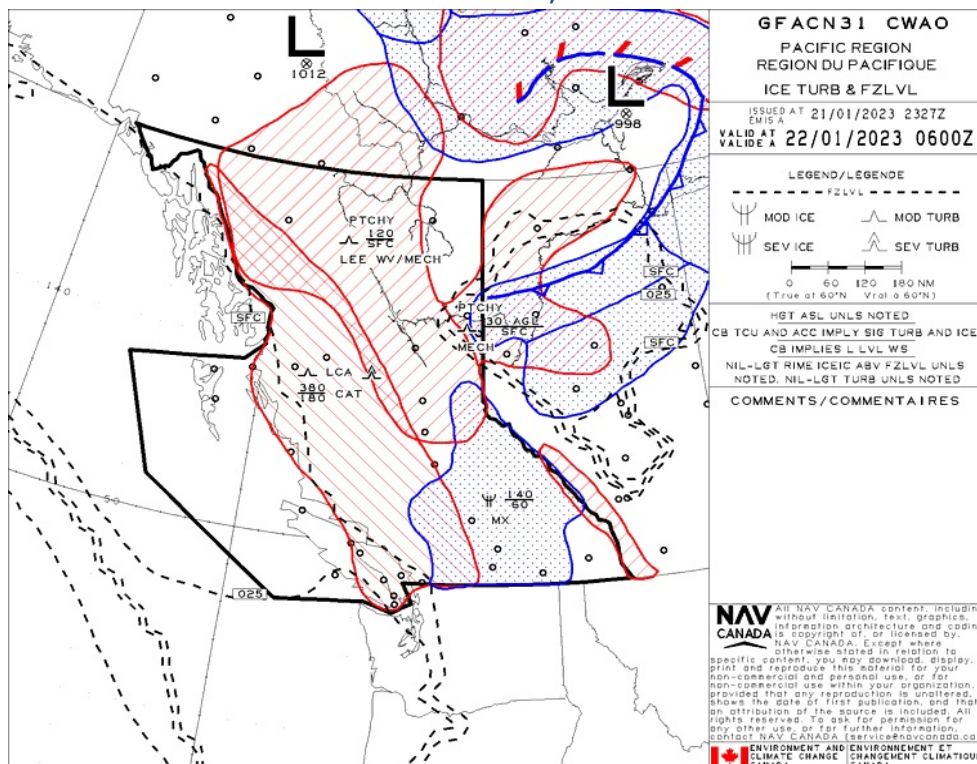
GFA Issue time + 00 hr - TURBULENCE, ICING AND FREEZING LEVEL



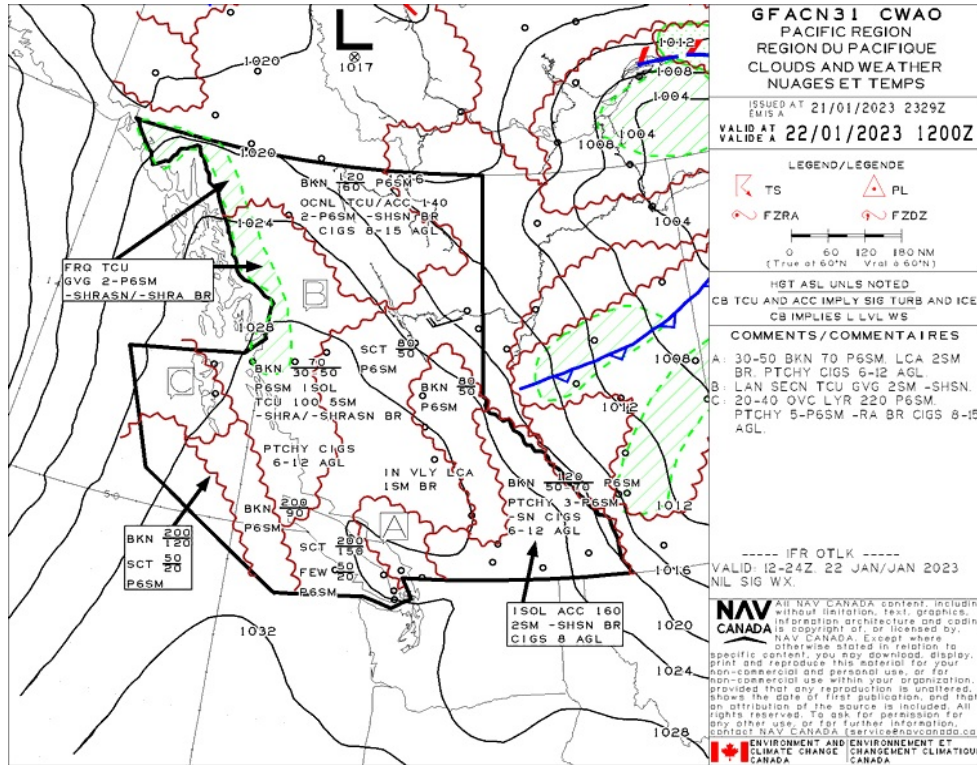
GFA Issue time + 06 hr - CLOUDS AND WEATHER



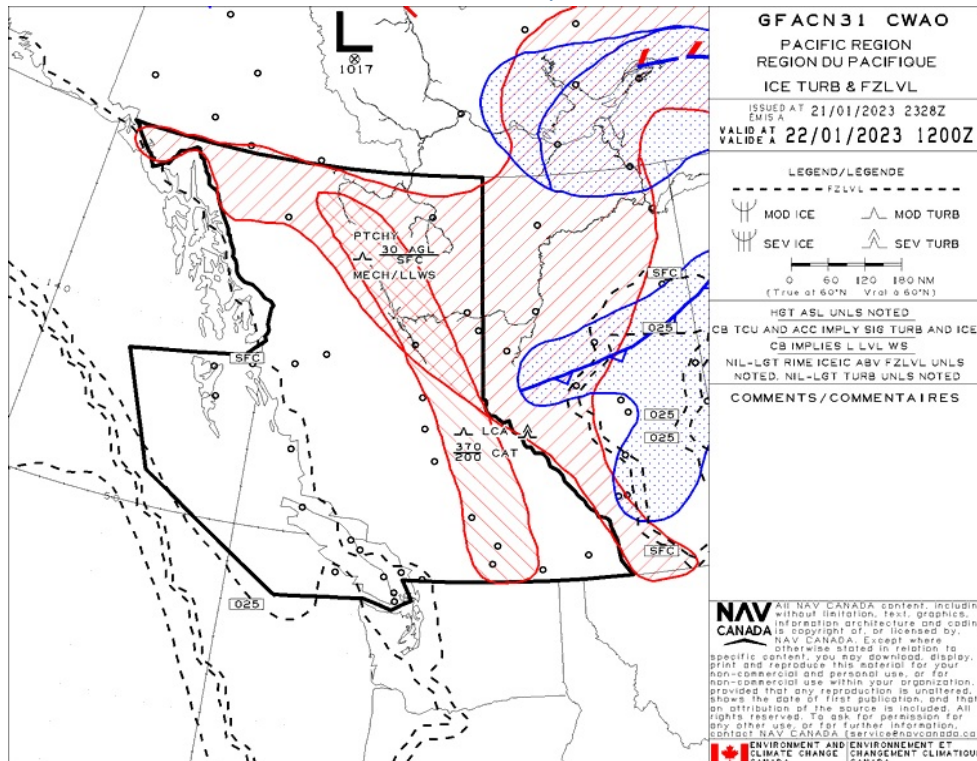
GFA Issue time + 06 hr - TURBULENCE, ICING AND FREEZING LEVEL



GFA Issue time + 12 hr - CLOUDS AND WEATHER



GFA Issue time + 12 hr - TURBULENCE, ICING AND FREEZING LEVEL



LANGLEY REGIONAL - CYNJ - Cert

NOTAM

(R1793/22 NOTAMN
Q) CZVR/Q0 AS/IV/M/AE/000/002/4904N12243W005
A) CYNJ B) 2212250418 C) 2302241800EST
E) OBST GT U/S TOWER 490344N 1224259W (APRX 4.1NM SW AD) 151FT AG , 184FT AMS .)

(F0099/23 NOTAMR F3468/22
Q) CZXX/Q0ECH/IV/NB0/E/000/999/5205N12506W999
A) CZVR CZEG B) 2301111839 C) 2304121800EST
E) A ACFT, REGARD ESS OF THE STATE OF REGISTRY, DIRECT Y OR INDIRECT Y OWNED, CHARTERED, EASED, OPERATED OR OTHERWISE CONTROLLED BY A PERSON CONNECTED WITH EITHER THE RUSSIAN FEDERATION OR OF BE ARUS OR BY A CORPORATION OR ENTITY THAT IS INCORPORATED OR FORMED UNDER THE LAWS OF THE RUSSIAN FEDERATION OR BE ARUS, AND A OPERATORS HOLDING AN AIR OPERATOR CERTIFICATE (AOC) ISSUED BY RUSSIAN FEDERATION AND/OR BE ARUSIAN AUTHORITIES ARE PROHIBITED TO ENTER, EXIT OR OVERFLY CANADA'S TERRITORIAL AIRSPACE (INCLUDING F T WITHIN 12NM OF CANADA'S COASTS). EXCEPTIONS PERMITTED FOR ACFT EXPERIENCING IMMINENT EMERG.

A AUTH OBTAINED PRIOR TO 27 FEB 2022 FOR ACFT AND OPS SUBJECT TO THIS NOTAM ARE REVOKED.

HUMANITARIAN, SAR, MEDEVAC AND ANY OTHER F T SEEKING AN EXCEPTION TO THIS RESTRICTION MUST RECEIVE AUTH GRANTED AFTER 27 FEB 2022 FROM THE MINISTER OF TRANSPORT TO OPERATE IN CANADA'S TERRITORIAL AIRSPACE. AFFECTED ACFT WISHING TO OBTAIN SUCH AN AUTH OR C R INTO CANADA'S TERRITORIAL AIRSPACE MAY APPLY TO THE MINISTER OF TRANSPORT AT 1-877-992-6853 OR 1-613-992-6853 OR BY EMAIL AT OPERATIONS.AVIATION(AT)TC.GC.CA.)

(I0026/23 NOTAMR I6965/22
Q) CZVR/Q0BCE/IV/M/AE/000/002/4906N12240W005
A) CYNJ B) 2301032200 C) 2304032200EST
E) CRANE 490612N 1223944W APRX 6810FT BFR DTHR 07 AND 50FT SOUTH EXTENDED RC . 144FT AG 178FT AMS . GTD.)

(F3996/22 NOTAMR F3928/22
Q) CZVR/QCAAS/IV/B/AE/000/999/4923N12022W200
A) CYDC B) 2212091948 C) 2301312359EST
E) VANCOUVER CENTRE PERIPHERAL STATION (PA) 351.3MHZ AT PRINCETON U/S)

(I0027/23 NOTAMR I5775/22
Q) CZVR/Q0BCE/IV/M/AE/000/002/4906N12239W005
A) CYNJ B) 2301032201 C) 2304032200EST
E) CRANE 490620N 1223854W APRX 3510FT BFR DTHR 07 AND 840FT NORTH EXTENDED RC . 125FT AG 161FT AMS . NOT GTD, PAINTED.)

(R1719/22 NOTAMN
Q) CZVR/Q0 AS/IV/M/AE/000/004/4910N12240W005
A) CXXX B) 2212092348 C) 2302072000EST
E) CAJ8 PITT MEADOWS (WATER)
OBST GT U/S TOWER 491028N 1224017W (APRX 2.6NM SE AD) 148FT AG , 364FT AMS .)

(F3992/22 NOTAMN
Q) CZVR/QAT T/IV/NB0/E/000/999/4912N12311W999
A) CZVR B) 2212081954 C) 2302081900EST
E) IN SUPPORT OF CYVR CA FOR REEASE PROGRAM:
IFR ACFT DEP CYCD CYAZ CYXX CZBB CYHC CYPK CYWH CYNJ CAP3 CYB CYZT CYKA CY W AND CYYF DESTINED FOR CYVR ARE REQUIRED TO CTC TWR, FSS OR FIC BTN 30-90 MIN PRIOR TO DEP FOR AN APPROVED DEP TIME.
IFR ACFT DEP CYYJ, CTC C EARRANCE DE IVERY ON FREQ 126.4MHZ BTN 30-90 MIN PRIOR TO DEP FOR AN APPROVED DEP TIME.
IFR ACFT DEP CYQQ CYPW AND CAT4 DESTINED FOR CYVR ARE REQUIRED TO CTC CYQQ TERMINA 250-339-8115 BTN 30 AND 90 MIN PRIOR TO DEP FOR AN APPROVED DEP TIME.)

(F0175/23 NOTAMN
Q) CZVR/QCEAS/I/B/E/000/999/4912N12312W250
A) CZVR B) 2301220000 C) 2301221400
E) SEA IS AND RADAR U/S. F T WITHIN 250NM RADIUS CENTRED ON 491152N 1231218W MAY BE DENIED ROUTING AND/OR A T REQUESTS AND SOME RADAR SVC MAY NOT BE AVBL IN C ASS C AND/OR D AIRSPACE.)

(R0029/23 NOTAMN
Q) CZVR/Q0 AS/IV/M/AE/000/002/4904N12243W005
A) CYNJ B) 2301111138 C) 2303111130EST
E) OBST GT U/S TOWER 490344N 1224259W (APRX 4.1NM SW AD) 151FT AG , 184FT AMS .)

(F0163/23 NOTAMR F0162/23
Q) CZXX/QXXXX/I/NB0/W/000/999/6650N11045W999
A) CZVR CZEG B) 2301181714 C) 2301260901
E) AIRSPACE SECURITY WARNING ISSUED BY THE DEPARTMENT OF TRANSPORT IN RESPONSE TO THE SECURITY SITUATION IN NORTH KOREA. CANADIAN AIR OPERATORS AND OWNERS OF AIRCRAFT REGISTERED IN CANADA ARE ADVISED NOT TO ENTER THE PYONGYANG FIR (ZKPP), DUE TO POTENTIAL RISK TO AVIATION FROM BALLISTIC MISSILE LAUNCHES WITHOUT PRIOR NOTICE. THIS NOTAM SUPERSEDES THE RESTRICTIONS CONCERNING NORTH KOREA ISSUED IN AIC 35/22.)

(I0247/23 NOTAMN
Q) CZVR/QFUAI/IV/NBO/A/000/999/4906N12238W005
A) CYNJ B) 2301240030 C) 2301260100EST
E) FUE JA-1 NOT AVB)

PITT MEADOWS - CAJ8 - Reg

NOTAM

(F3996/22 NOTAMR F3928/22
Q) CZVR/QCAAS/IV/B/AE/000/999/4923N12022W000
A) CYDC B) 2212091948 C) 2301312359EST
E) VANCOUVER CENTRE PERIPHERA STATION (PA)
351.3MHZ AT PRINCETON U/S)

(I7816/22 NOTAMN
Q) CZVR/QPICH/I/NB0/A/000/999/4913N12243W005
A) CYPK B) 2212291409 C) PERM
E) AMEND PUB ICATIONS:
RNAV (GNSS) Z RWY 08R APCH: CIRC ING RESTRICTION: DE ETE)

(R1719/22 NOTAMN
Q) CZVR/Q0 AS/IV/M/AE/000/004/4910N12240W005
A) CXXX B) 2212092348 C) 2302072000EST
E) CAJ8 PITT MEADOWS (WATER)
OBST GT U/S TOWER 491028N 1224017W (APRX 2.6NM SE AD) 148FT AG ,
364FT AMS .)

(I7567/22 NOTAMR I5596/22
Q) CZVR/Q0BCE/IV/M/AE/000/002/4913N12241W005
A) CXXX B) 2212201755 C) 2303201800EST
E) CAJ8 PITT MEADOWS (WATER)
CRANE 491236N 1224118W (APRX 5040FT ENE AD). 90FT AG 108FT AMS .
NOT GTD.)

(F3992/22 NOTAMN
Q) CZVR/QAT T/IV/NB0/E/000/999/4912N12311W999
A) CZVR B) 2212081954 C) 2302081900EST
E) IN SUPPORT OF CYVR CA FOR RE EASE PROGRAM:
IFR ACFT DEP CYCD CYAZ CYXX CZBB CYHC CYPK CYWH CYNJ CAP3 CYB
CYZT CYKA CY W AND CYF DESTINED FOR CYVR ARE REQUIRED TO CTC
TWR, FSS OR FIC BTN 30-90 MIN PRIOR TO DEP FOR AN APPROVED DEP
TIME.
IFR ACFT DEP CYYJ, CTC C EARANDE DE IVERY ON FREQ 126.4MHZ BTN
30-90 MIN PRIOR TO DEP FOR AN APPROVED DEP TIME.
IFR ACFT DEP CYQQ CYPW AND CAT4 DESTINED FOR CYVR ARE REQUIRED TO
CTC CYQQ TERMINA 250-339-8115 BTN 30 AND 90 MIN PRIOR TO DEP FOR
AN APPROVED DEP TIME.)

(F0175/23 NOTAMN
Q) CZVR/QCEAS/I/B/E/000/999/4912N12312W250
A) CZVR B) 2301220000 C) 2301221400
E) SEA IS AND RADAR U/S. F T WITHIN 250NM RADIUS CENTRED ON 491152N
1231218W MAY BE DENIED ROUTING AND/OR A T REQUESTS AND SOME RADAR
SVC MAY NOT BE AVB IN C ASS C AND/OR D AIRSPACE.)

(F0163/23 NOTAMR F0162/23
Q) CZXX/QXXXX/I/NB0/W/000/999/6650N11045W999
A) CZVR CZEG B) 2301181714 C) 2301260901
E) AIRSPACE SECURITY WARNING ISSUED BY THE DEPARTMENT OF TRANSPORT
IN RESPONSE TO THE SECURITY SITUATION IN NORTH KOREA. CANADIAN
AIR OPERATORS AND OWNERS OF AIRCRAFT REGISTERED IN CANADA ARE
ADVISED NOT TO ENTER THE PYONGYANG FIR (ZKPP), DUE TO POTENTIAL
RISK TO AVIATION FROM BALLISTIC MISSILE LAUNCHES WITHOUT PRIOR
NOTICE. THIS NOTAM SUPERSEDES THE RESTRICTIONS CONCERNING NORTH
KOREA ISSUED IN AIC 35/22.)

(I6960/22 NOTAMN
Q) CZVR/Q0BCE/IV/M/AE/000/001/4913N12244W005
A) CYPK B) 2211221500 C) 2302220100
D) DAI Y 1500 - 0100
E) MOBI E CRANE WITHIN 145FT RADIUS CENTRED ON 491252N 1224346W APRX
1520FT BFR DTHR 08R AND 270FT SOUTH EXTENDED RC . 82FT AG 97FT
AMS . NOT GTD, NOT PAINTED.)

(I0226/23 NOTAMR I7007/22
Q) CZVR/QFUAH/IV/NB0/A/000/999/4913N12243W005
A) CYPK B) 2301192333 C) 2304192300EST
E) FUE JA-1 AVB 1530-0100 MON-FRI EXC HO ,
OTHER TIMES CA OUT AVB)

(F0099/23 NOTAMR F3468/22
Q) CZXX/QOECH/IV/NB0/E/000/999/5205N12506W999
A) CZVR CZEG B) 2301111839 C) 2304121800EST
E) A ACFT, REGARDLESS OF THE STATE OF REGISTRY, DIRECTLY OR
INDIRECTLY OWNED, CHARTERED, EASED, OPERATED OR OTHERWISE
CONTROLLED BY A PERSON CONNECTED WITH EITHER THE RUSSIAN
FEDERATION OR OF BEARUS OR BY A CORPORATION OR ENTITY THAT IS
INCORPORATED OR FORMED UNDER THE LAWS OF THE RUSSIAN FEDERATION
OR BEARUS, AND A OPERATORS HOLDING AN AIR OPERATOR CERTIFICATE
(AOC) ISSUED BY RUSSIAN FEDERATION AND/OR BEARUSIAN AUTHORITIES
ARE PROHIBITED TO ENTER, EXIT OR OVERFLY CANADA'S TERRITORIAL
AIRSPACE (INCLUDING F T WITHIN 12NM OF CANADA'S COASTS).
EXCEPTIONS PERMITTED FOR ACFT EXPERIENCING IMMINENT EMERG.

A AUTH OBTAINED PRIOR TO 27 FEB 2022 FOR ACFT AND OPS SUBJECT
TO THIS NOTAM ARE REVOKED.

HUMANITARIAN, SAR, MEDEVAC AND ANY OTHER F T SEEKING AN EXCEPTION
TO THIS RESTRICTION MUST RECEIVE AUTH GRANTED AFTER 27 FEB 2022
FM THE MINISTER OF TRANSPORT TO OPERATE IN CANADA'S TERRITORIAL
AIRSPACE. AFFECTED ACFT WISHING TO OBTAIN SUCH AN AUTH OR CR

INTO CANADA'S TERRITORIES AIRSPACE MAY APPLY TO THE MINISTER OF
TRANSPORT AT 1-877-992-6853 OR 1-613-992-6853 OR BY EMAIL AT
OPERATIONS.AVIATION(AT)TC.GC.CA.)

DELTA HERITAGE AIR PARK - CAK3 - Reg

NOTAM

(F3996/22 NOTAMR F3928/22
Q) CZVR/QCAAS/IV/B/AE/000/999/4923N12022W200
A) CYDC B) 2212091948 C) 2301312359EST
E) VANCOUVER CENTRE PERIPHERA STATION (PA)
351.3MHZ AT PRINCETON U/S)

(F3992/22 NOTAMN
Q) CZVR/QAT T/IV/NB0/E/000/999/4912N12311W999
A) CZVR B) 2212081954 C) 2302081900EST
E) IN SUPPORT OF CYVR CA FOR RE EASE PROGRAM:
IFR ACFT DEP CYCD CYAZ CYXX CZBB CYHC CYPK CYWH CYNJ CAP3 CYB
CYTZ CYKA CY W AND CYYF DESTINED FOR CYVR ARE REQUIRED TO CTC
TWR, FSS OR FIC BTN 30-90 MIN PRIOR TO DEP FOR AN APPROVED DEP
TIME.
IFR ACFT DEP CYYJ, CTC C EARRANCE DE IVERY ON FREQ 126.4MHZ BTN
30-90 MIN PRIOR TO DEP FOR AN APPROVED DEP TIME.
IFR ACFT DEP CYQQ CYPW AND CAT4 DESTINED FOR CYVR ARE REQUIRED TO
CTC CYQQ TERMINA 250-339-8115 BTN 30 AND 90 MIN PRIOR TO DEP FOR
AN APPROVED DEP TIME.)

(F0175/23 NOTAMN
Q) CZVR/QCEAS/I/B/E/000/999/4912N12312W250
A) CZVR B) 2301220000 C) 2301221400
E) SEA IS AND RADAR U/S. F T WITHIN 250NM RADIUS CENTRED ON 491152N
1231218W MAY BE DENIED ROUTING AND/OR A T REQUESTS AND SOME RADAR
SVC MAY NOT BE AVB IN C ASS C AND/OR D AIRSPACE.)

(F0163/23 NOTAMR F0162/23
Q) CZXX/QXXX/I/NB0/W/000/999/6650N11045W999
A) CZVR CZEG B) 2301181714 C) 2301260901
E) AIRSPACE SECURITY WARNING ISSUED BY THE DEPARTMENT OF TRANSPORT
IN RESPONSE TO THE SECURITY SITUATION IN NORTH KOREA. CANADIAN
AIR OPERATORS AND OWNERS OF AIRCRAFT REGISTERED IN CANADA ARE
ADVISED NOT TO ENTER THE PYONGYANG FIR (ZKKP), DUE TO POTENTIAL
RISK TO AVIATION FROM BALLISTIC MISSILE LAUNCHES WITHOUT PRIOR
NOTICE. THIS NOTAM SUPERSEDES THE RESTRICTIONS CONCERNING NORTH
KOREA ISSUED IN AIC 35/22.)

(R0061/23 NOTAMR R1803/22
Q) CZVR/QO AS/IV/M/AE/000/006/4909N12257W005
A) CXXX B) 2301181935 C) 2302012000EST
E) CVS3 VANCOUVER/SURREY MEMORIA HOSPITA (HE I)
OBST GT U/S TOWER 490928N 1225630W (APRX 4NM WSW AD) 566FT AG ,
566FT AMS .)

(F0099/23 NOTAMR F3468/22
Q) CZXX/QOEC/IV/NB0/E/000/999/5205N12506W999
A) CZVR CZEG B) 2301111839 C) 2304121800EST
E) A ACFT, REGARDLESS OF THE STATE OF REGISTRY, DIRECTLY OR
INDIRECTLY OWNED, CHARTERED, EASED, OPERATED OR OTHERWISE
CONTROLLED BY A PERSON CONNECTED WITH EITHER THE RUSSIAN
FEDERATION OR OF BEARUS OR BY A CORPORATION OR ENTITY THAT IS
INCORPORATED OR FORMED UNDER THE LAWS OF THE RUSSIAN FEDERATION
OR BEARUS, AND A OPERATORS HOLDING AN AIR OPERATOR CERTIFICATE
(AOC) ISSUED BY RUSSIAN FEDERATION AND/OR BEARUSIAN AUTHORITIES
ARE PROHIBITED TO ENTER, EXIT OR OVERFLY CANADA'S TERRITORIAL
AIRSPACE (INCLUDING F T WITHIN 12NM OF CANADA'S COASTS).
EXCEPTIONS PERMITTED FOR ACFT EXPERIENCING IMMEDIATE EMERG.

A AUTH OBTAINED PRIOR TO 27 FEB 2022 FOR ACFT AND OPS SUBJECT
TO THIS NOTAM ARE REVOKED.

HUMANITARIAN, SAR, MEDEVAC AND ANY OTHER F T SEEKING AN EXCEPTION
TO THIS RESTRICTION MUST RECEIVE AUTH GRANTED AFTER 27 FEB 2022
FM THE MINISTER OF TRANSPORT TO OPERATE IN CANADA'S TERRITORIAL
AIRSPACE. AFFECTED ACFT WISHING TO OBTAIN SUCH AN AUTH OR CROSS
INTO CANADA'S TERRITORIAL AIRSPACE MAY APPLY TO THE MINISTER OF
TRANSPORT AT 1-877-992-6853 OR 1-613-992-6853 OR BY EMAIL AT
OPERATIONS.AVIATION(AT)TC.GC.CA.)

PITT MEADOWS - CYPK - Cert

NOTAM

(F3996/22 NOTAMR F3928/22
Q) CZVR/QCAAS/IV/B/AE/000/999/4923N12022W000
A) CYDC B) 2212091948 C) 2301312359EST
E) VANCOUVER CENTRE PERIPHERA STATION (PA)
351.3MHZ AT PRINCETON U/S)

(I7816/22 NOTAMN
Q) CZVR/QPICH/I/NB0/A/000/999/4913N12243W005
A) CYPK B) 2212291409 C) PERM
E) AMEND PUB ICATIONS:
RNAV (GNSS) Z RWY 08R APCH: CIRC ING RESTRICTION: DE ETE)

(R1719/22 NOTAMN
Q) CZVR/Q0 AS/IV/M/AE/000/004/4910N12240W005
A) CXXX B) 2212092348 C) 2302072000EST
E) CAJ8 PITT MEADOWS (WATER)
OBST GT U/S TOWER 491028N 1224017W (APRX 2.6NM SE AD) 148FT AG ,
364FT AMS .)

(I7567/22 NOTAMR I5596/22
Q) CZVR/Q0BCE/IV/M/AE/000/002/4913N12241W005
A) CXXX B) 2212201755 C) 2303201800EST
E) CAJ8 PITT MEADOWS (WATER)
CRANE 491236N 1224118W (APRX 5040FT ENE AD). 90FT AG 108FT AMS .
NOT GTD.)

(F3992/22 NOTAMN
Q) CZVR/QAT T/IV/NB0/E/000/999/4912N12311W999
A) CZVR B) 2212081954 C) 2302081900EST
E) IN SUPPORT OF CYVR CA FOR RE EASE PROGRAM:
IFR ACFT DEP CYCD CYAZ CYXX CZBB CYHC CYPK CYWH CYNJ CAP3 CYB
CYZT CYKA CY W AND CYF DESTINED FOR CYVR ARE REQUIRED TO CTC
TWR, FSS OR FIC BTN 30-90 MIN PRIOR TO DEP FOR AN APPROVED DEP
TIME.
IFR ACFT DEP CYYJ, CTC C EARANCE DE IVERY ON FREQ 126.4MHZ BTN
30-90 MIN PRIOR TO DEP FOR AN APPROVED DEP TIME.
IFR ACFT DEP CYQQ CYPW AND CAT4 DESTINED FOR CYVR ARE REQUIRED TO
CTC CYQQ TERMINA 250-339-8115 BTN 30 AND 90 MIN PRIOR TO DEP FOR
AN APPROVED DEP TIME.)

(F0175/23 NOTAMN
Q) CZVR/QCEAS/I/B/E/000/999/4912N12312W250
A) CZVR B) 2301220000 C) 2301221400
E) SEA IS AND RADAR U/S. F T WITHIN 250NM RADIUS CENTRED ON 491152N
1231218W MAY BE DENIED ROUTING AND/OR A T REQUESTS AND SOME RADAR
SVC MAY NOT BE AVB IN C ASS C AND/OR D AIRSPACE.)

(F0163/23 NOTAMR F0162/23
Q) CZXX/QXXXX/I/NB0/W/000/999/6650N11045W999
A) CZVR CZEG B) 2301181714 C) 2301260901
E) AIRSPACE SECURITY WARNING ISSUED BY THE DEPARTMENT OF TRANSPORT
IN RESPONSE TO THE SECURITY SITUATION IN NORTH KOREA. CANADIAN
AIR OPERATORS AND OWNERS OF AIRCRAFT REGISTERED IN CANADA ARE
ADVISED NOT TO ENTER THE PYONGYANG FIR (ZKPP), DUE TO POTENTIAL
RISK TO AVIATION FROM BALLISTIC MISSILE LAUNCHES WITHOUT PRIOR
NOTICE. THIS NOTAM SUPERSEDES THE RESTRICTIONS CONCERNING NORTH
KOREA ISSUED IN AIC 35/22.)

(I6960/22 NOTAMN
Q) CZVR/Q0BCE/IV/M/AE/000/001/4913N12244W005
A) CYPK B) 2211221500 C) 2302220100
D) DAI Y 1500 - 0100
E) MOBI E CRANE WITHIN 145FT RADIUS CENTRED ON 491252N 1224346W APRX
1520FT BFR DTHR 08R AND 270FT SOUTH EXTENDED RC . 82FT AG 97FT
AMS . NOT GTD, NOT PAINTED.)

(I0226/23 NOTAMR I7007/22
Q) CZVR/QFUAH/IV/NB0/A/000/999/4913N12243W005
A) CYPK B) 2301192333 C) 2304192300EST
E) FUE JA-1 AVB 1530-0100 MON-FRI EXC HO ,
OTHER TIMES CA OUT AVB)

(F0099/23 NOTAMR F3468/22
Q) CZXX/QOECH/IV/NB0/E/000/999/5205N12506W999
A) CZVR CZEG B) 2301111839 C) 2304121800EST
E) A ACFT, REGARDLESS OF THE STATE OF REGISTRY, DIRECTLY OR
INDIRECTLY OWNED, CHARTERED, EASED, OPERATED OR OTHERWISE
CONTROLLED BY A PERSON CONNECTED WITH EITHER THE RUSSIAN
FEDERATION OR OF BEARUS OR BY A CORPORATION OR ENTITY THAT IS
INCORPORATED OR FORMED UNDER THE LAWS OF THE RUSSIAN FEDERATION
OR BEARUS, AND A OPERATORS HOLDING AN AIR OPERATOR CERTIFICATE
(AOC) ISSUED BY RUSSIAN FEDERATION AND/OR BEARUSIAN AUTHORITIES
ARE PROHIBITED TO ENTER, EXIT OR OVERFLY CANADA'S TERRITORIAL
AIRSPACE (INCLUDING F T WITHIN 12NM OF CANADA'S COASTS).
EXCEPTIONS PERMITTED FOR ACFT EXPERIENCING IMMINENT EMERG.

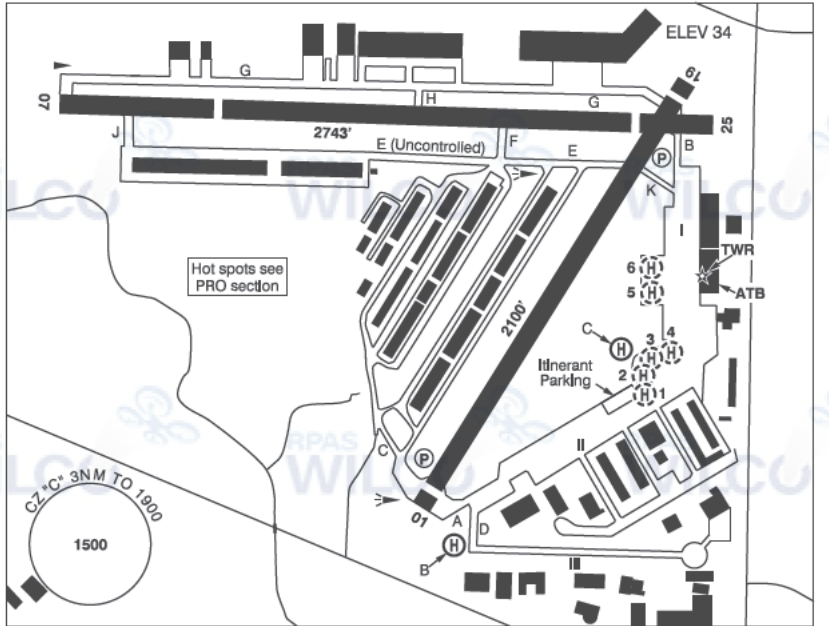
A AUTH OBTAINED PRIOR TO 27 FEB 2022 FOR ACFT AND OPS SUBJECT
TO THIS NOTAM ARE REVOKED.

HUMANITARIAN, SAR, MEDEVAC AND ANY OTHER F T SEEKING AN EXCEPTION
TO THIS RESTRICTION MUST RECEIVE AUTH GRANTED AFTER 27 FEB 2022
FM THE MINISTER OF TRANSPORT TO OPERATE IN CANADA'S TERRITORIAL
AIRSPACE. AFFECTED ACFT WISHING TO OBTAIN SUCH AN AUTH OR CR

INTO CANADA'S TERRITORIES AIRSPACE MAY APPLY TO THE MINISTER OF
TRANSPORT AT 1-877-992-6853 OR 1-613-992-6853 OR BY EMAIL AT
OPERATIONS.AVIATION(AT)TC.GC.CA.)

LANGLEY REGIONAL BC

CYNJ



REF	N49 06 03 W122 37 51 Adj 17°E (2013) UTC-8(7) Elev 34' VTA A5004 LO2 T1 CAP
OPR	Township of Langley 604-534-7330 APM 1500-0130Z± Cert
PF	B-1,2,3 C-4,5,6
CUST	AOE/CAN
FLT PLN	
FIC	Kamloops 866-WXBRIEF (Toll free within Canada) or 866-541-4101 (Toll free within Canada & USA)
ACC	Vancouver IFR 604-586-4590/4591; IFR tng flts PPR ctc 604-586-4592; ctc Victoria Tml 604-586-4561 for IFR clnc when TWR clsd.
DUAT	APM'S office
WX	LAWO 1630-0230Z (DT 1530-0330Z)
SERVICES	
FUEL	100LL (self-serve), JA-1 (1530-0100Z± by truck, 604-360-2306)
OIL	All
S	1,2,3,4,5
RWY DATA	Rwy 07(075°)/25(255°) 2743x75 ASPH Thld 07 displ 654'. Thld 25 displ 343'. Avbl dur twr oprg hrs only. Ngt ops not auth. Rwy 01(015°)/19(195°) 2100x75 ASPH Thld 01 displ 104'. Thld 19 displ 96'. Rwy 01 preferred rwy when twr clsd. Rwy 01 designated calm wind rwy.
RWY CERT	Rwy 01/19 AGN I Rwy 07/25 AGN I
TWY	Twy E uncontrolled west of Twy F.
APRON	Apron I & II wing tip clearance less than 50' wide in some areas
RCR	Twr 604-514-9324 Ltd win maint Aprt rstd to a max wt of 12,500 lbs exc with opr au h PLR

BRITISH COLUMBIA

AERODROME / FACILITY DIRECTORY

LANGLEY REGIONAL BC (Cont'd)

CYNJ

HELI DATA	<p>B - FATO 110' dia ASPH TLOF 28' dia ASPH Safety Area 143' dia Max heli length 58' (exc with opr appr) 20,500 lbs. Medevac flt only 06-15Z±. C - FATO/TLOF 85' dia ASPH Safety Area 110' dia Max heli overall length 59' (exc with ops appr). 20,500lbs. Day only. Parking Pad 1: 31' dia CONC 3600 lbs For temporary prkg and refueling only (100LL only). Parking Pads 2-4: 31' dia CONC 3600 lbs Private. Parking Pads 5 & 6: 66' dia ASPH 14,000lbs Max heli overall length 55'</p>
LIGHTING	<p>01-(TE ME) P1 4.5°, 19-(TE ME) AP 4.0° Lgts on automatic timer single setting after twr hrs to 07Z±. FATO-B: RW no aiming pt (LO) ARCAL-119.0 type J (FATO-B use ONLY, No ARCAL on rwy)</p>
COMM	<p>ATIS 124.5 1-877-517-2847 1630-0230Z (DT 1530-0330Z) GND 121.9 1630-0230Z (DT 1530-0330Z) TWR 119.0 (V) 1630-0230Z (DT 1530-0330Z) (emerg only 604-534-9443) MF tfc 119.0 0230-1630Z (DT 0330-1530Z) 3NM 1900 ASL (CAR 602.98)</p>
NAV	<p>VOR PITT MEADOWS YPK 112.4 N49 12 57 W122 42 54 (44')</p>
PRO	<p>No circuits on any rwy from 2130-0800 local time.</p> <p>Pilots should refer to Canadian Airport Charts (CAC) to obtain details on established hot spots, prior to operating on maneuvering areas. CAC are available for free on the NAV CANADA website.</p> <p>ALL DEPARTURES: Ctc 121.9 after run-up or prior to entering twy with TYPE / IDENT / POSITION / INTENTIONS / RUN UP COMPLETE</p> <p>RWY 19 DEPARTURES: Best rate of climb. Climb rwy hdg til S of Fraser Hwy. Turn left track aprx 160° to follow green belt. Make crosswind turn S of 44th Ave over Langley Golf Centre. Make turn to downwind E of 224th St towards Tall Timbers Golf Course. Follow VTPC FIXED WING CIRCUITS RWY 19. Avoid flt over built up areas on crosswind and downwind legs. Circuit altitude 1000 ASL.</p> <p>RWY 25 DEPARTURES: Rgt hand circuits (CAR 602.96). Best rate of climb. Rwy 07/25 shall not be used when twr is clsd.</p> <p>VFR ARR/DEP ROUTES: See FIXED WING ARR/DEP VTPC</p> <p>ATS REQUIREMENTS: All VFR acft arriving, departing or transiting the Vancouver or Victoria Tower Class C or D airspace require a transponder code. - All acft departing Vancouver or Victoria Intl (including Water Aerodrome) call Kamloops FIC at 866-541-4101 or PAC RDO 122.5 or 123.15 for code assignment at least 30 min prior to flight or file a VFR Flight Plan/Flight Iinerary. - All acft arriving Vancouver, Victoria Intl (including Water Aerodrome) or transiting Vancouver or Victoria Control Zones obtain a code from one of the following ATS units: Vancouver Harbour, Nanaimo, Victoria Harbour, Boundary Bay, Langley, Abbotsford or Pitt Meadows or call Kamloops FIC at 866-541-4101 or PAC RDO 122.5 or 123.15. - All acft arriving Victoria Intl from a non NAV CANADA site call Kamloops FIC at 866-541-4101 or PAC RDO 122 5 or 123.15 for code assignment at least 30 minutes prior to flight or file a VFR Flight Plan/ Flight Itinerary.</p>

BRITISH COLUMBIA

AERODROME / FACILITY DIRECTORY

LANGLEY REGIONAL BC (Cont'd)

CYNJ

HELI	<p>Day: East route dep expedite climb to 600 ASL prior to 232nd street. East of 232nd street commence climb to 1000 ASL. East route arr maintain 1000 ASL descend to 600 ASL prior to 232nd street. South East route dep expedite climb to 1000 ASL prior to 216th street. South East route arr maintain 1000 ASL to 216th street. North route dep expedite climb to 600 ASL prior to Milner. North of Milner commence climb to 1000 ASL. North route arr maintain 1000 ASL descend to 600 ASL prior to Milner.</p> <p>Night: North route arr/dep overfly Rwy 01 min alt 1000 at Milner.</p> <p>West route arr/dep overfly Fraser hwy min alt 1000 ASL at bypass. Medium to hvy heli are only permitted to gnd taxi on Apron III. Hover taxiing on Apron III proh unless coordinated with APM.</p> <p>All Heli must ctc GND 121.9 for transponder code and routing info.</p>
CAUTION	<p>Trees to 100 AGL 250' SE pad B, 250' W Thld 07, and S of Fraser hwy. Only pilots familiar with airport should use airport dur hrs of darkness. Use caution when taxiing on Apron I & II due to min wing-tip clearance and frequent heli ops. Frequent heli arr/dep on Aprons I & II. ATC ctc not rqrd for vehicle and fixed-wing movement on aprons. Heli aiming point at eastern end of Apron III. Ocsl wildlife.</p>

CANADA WATER AERODROME SUPPLEMENT

Effective 0901Z 24 March 2022 to 0901Z 20 April 2023

AERODROME/FACILITY DIRECTORY B161

PICKLE LAKE ON (Cont'd)

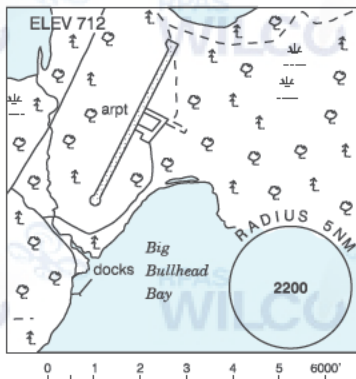
CKG4

PRO	Acraft not to overfly townsites below 1000 AGL. Ldg or tkof not authorized within area depicted in sketch.
CAUTION	Lgt d twr 1528 ASL 1.4NM ENE. Unlgt d twr 1357 ASL 0.6NM ENE. Land A/D 1.3NM S.

PINE DOCK MB

CKT8

REF	N51 36 39 W96 49 02 1S 3°E (2014) UTC-6(5) Elev 712' A5007
OPR	Kitchi Airways 204-276-2463 Reg PPR
PF	B-1 C-2,4,5
FLT PLN	Pilots to open/close VFR flt plan with Edmonton rdo, FISE or by phone. Edmonton 866-WXBRIEF (Toll free within Canada) or 866-541-4102 (Toll free within Canada & USA)
SERVICES	
FUEL	100LL, JA
S	4
PVT ADV	Kitchi Airways 124.8
A/D DATA	Open water mid May-mid Nov
COMM	
ATF	ttc 122.8 5NM 3800 ASL

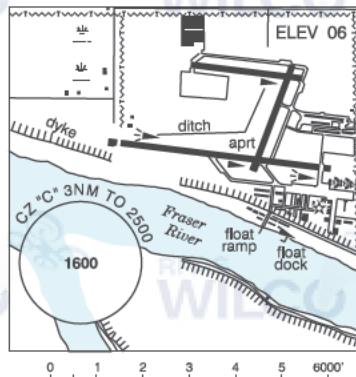


PISTOL LAKE ON — See MINAKI / PISTOL LAKE

PITT MEADOWS BC

CAJ8

REF	N49 12 34 W122 42 34 1SW 17°E (2013) UTC-8(7) Elev 06' VTA A5004
OPR	Pitt Meadows Arpt Society 604-465-8977 15-01Z† Mon-Fri Reg
PF	A-1,2,3,7 at adj land A/D C-4,5,6
FLT PLN	
FIC	Kamloops 866-WXBRIEF (Toll free within Canada) or 866-541-4101 (Toll free within Canada & USA)
WX	LAWO 15-07Z†
SERVICES	
FUEL	100LL, JA-1 at adj land A/D
OIL	All
S	1,2,3,4,5 at adj land A/D
A/D DATA	Tidal range 4', current 3-8 kt.
COMM	
ATIS	125.0 1-877-517-2847 15-07Z†
GND	123.8 15-07Z†
TWR	Pitt 126.3 (V) 15-07Z†
MF	ttc 126.3 07-15Z† 3NM 2500 ASL (CAR 602.98)



CANADA WATER AERODROME SUPPLEMENT

Effective 0901Z 24 March 2022 to 0901Z 20 April 2023

B162 AERODROME/FACILITY DIRECTORY

PITT MEADOWS BC (Cont'd)

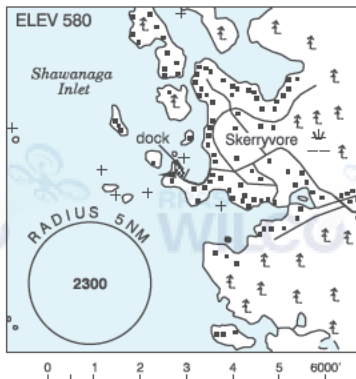
CAJ8

NAV	VOR YPK 112.4 N49 12 57 W122 42 54
PRO	Circuit altitude for seaplanes 500 ASL, all circuits on S side of Fraser River. Arr/dep avoid low flt over built-up areas, or as directed by ATC. Eastbound dep on Fraser River initiate tkof W of float ramp, or as directed by ATC.
CAUTION	Drifting logs. Lower end of seaplane launching ramp is less than 1' below zero tide level; caution at low tides.

POINTE AU BARIL STATION ON

CPB6

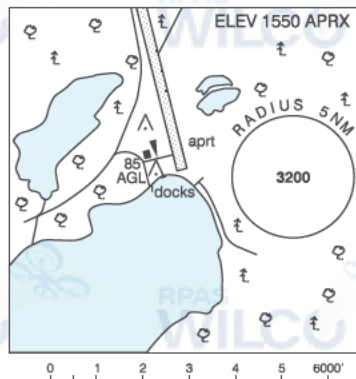
REF	N45 32 24 W80 23 15 4SW 11°W UTC-5(4) Elev 580' A5000
OPR	Jeremy and Ryan Edwards 647-202-9995 or 416-400-5244 Reg
PF	B-5
FLT PLN	FIC London 866-WXBRIEF (Toll free w/ in Canada) or 866-541-4104 (Toll free within Canada & USA)
A/D DATA	Open water May-mid Nov, sandy bottom. Dock depth 5'.
COMM	ATF tfc 123.2 5NM 3600 ASL
CAUTION	Rock shoal 82' NE of boathouse marked with white buoy. Enter bay from N. Remain E of island.



POINTS NORTH LANDING SK

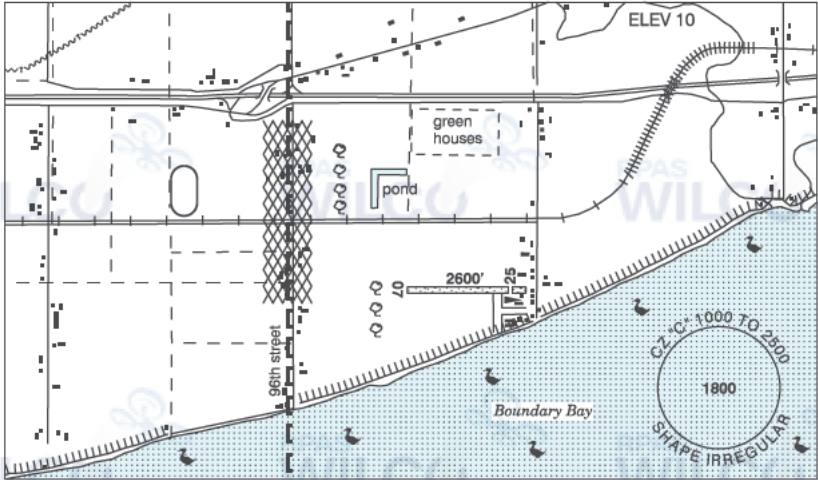
CKC2

REF	N58 16 04 W104 04 48 Adj S 9°E (2014) UTC-6 Elev 1550' aprx A5024
OPR	Points North Freight Forwarding Inc 306-633-2137 Reg
PF	B-1,2,5 PN Opr
FLT PLN	FIC Edmonton 866-WXBRIEF (Toll free within Canada) or 866-541-4102 (Toll free within Canada & USA)
SERVICES	FUEL 100LL, JA-1 (FSII avbl) OIL All S 1,2,4,6
A/D DATA	Open water Jun-mid Oct. Sand bottom, ramp.
COMM	ATF 68 Points North UNICOM ltd hrs O/T tfc 123.3 5NM centred on Points North Landing land A/D adj 4700 ASL
CAUTION	Extv tfc adj land aprt. VHF rdo twr 85 AGL on apron. Lgtd twr 1991 ASL (370 AGL) 3NM SW of A/D.



DELTA / DELTA HERITAGE AIR PARK BC

CAK3



REF	N49 04 43 W122 56 17 4.5E 17°E (2013) UTC-8(7) Elev 10' VTA A5004
OPR	Recreational Aircraft Association, Chap 85 (DapCom) 604-543-8894, Caretaker 604-722-3791 Reg PPR by phone 604-878-9050
PF	B-1 C-2,3,6 D-4,5
FLT PLN	
FIC	Kamloops 866-WXBRIEF (Toll free within Canada) or 866-541-4101 (Toll free within Canada & USA)
SERVICES	
FUEL	100LL
S	4,5
RWY DATA	Rwy 07/25 2600x75 TURF Thld 25 displ 300'
RCR	Opr No win maint. Rwy soft when wet
COMM	
ATIS	Boundary Bay 125.5 15-07Z±
ATF	tfc 123.3 2NM below 1000 ASL Excluding that portion which penetrates Boundary Bay class "C" airspace.

BRITISH COLUMBIA

AERODROME / FACILITY DIRECTORY

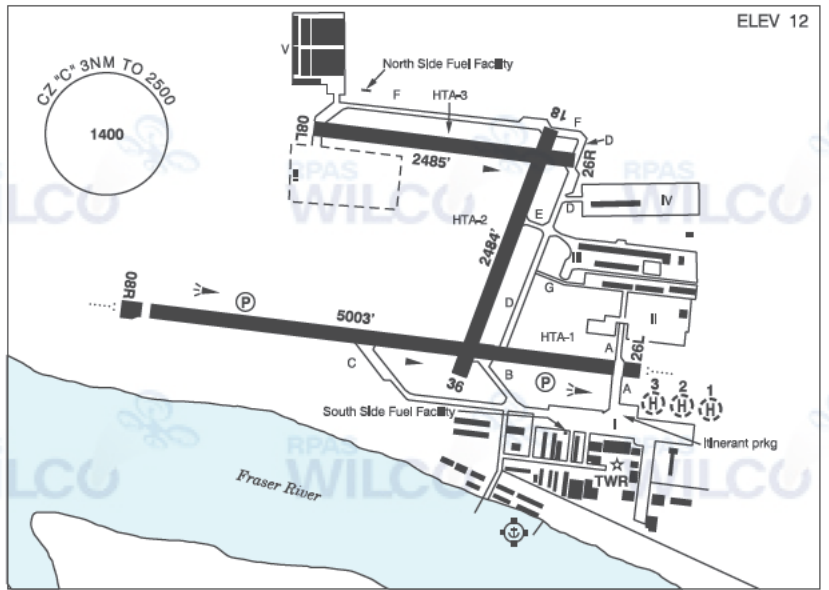
DELTA / DELTA HERITAGE AIR PARK BC (Cont'd)

CAK3

PRO	<p>HELI NOISE</p> <p>Heli tng not auth.</p> <p>Circuit alt 600 ASL. Rgt hand circuits Rwy 25 (CAR 602.96).</p> <p>NOISE ABATEMENT PROCEDURES:</p> <p><u>Departures:</u></p> <p>Rwy 25 Dep: When safe hdg 280°, then further right turn to crosswind to avoid noise sensitive area.</p> <p>Downwind dep auth fr Rwy 25 at 600 ASL. No southbound dep until clear of circuit to E. Avoid flt over dike and adj water area below 600 ASL.</p> <p><u>Arrivals:</u></p> <p>All arr to air park fr seaside. Cross midfield at 600 ASL and join downwind (CAR 602.96).</p> <p>Rwy 07 Arr: Fr downwind, turn on base leg well bfr 96th Street to avoid noise-sensitive area. When S of railway tracks hdg 100° to intercept final apch E of row of trees.</p> <p>Boundary Bay A/D 2.5NM W, obtain clnc prior to entering Boundary Bay CZ. Refer to VTPC. Procedures for crossing the Southern Strait of Georgia within Tml Class C airspace refer to Vancouver Intl VTPC FOR CROSSING THE SOUTHERN STRAIT OF GEORGIA ABOVE 2500FT.</p>
CAUTION	<p>Extremely confined circuit. Trees 750' fr thld Rwy 07, trees and obst adj to thld Rwy 25. Acft unable to accommodate noise abatement procedures and obst avoidance should avoid the air park. Beware of Boundary Bay A/D tfc close to Delta Heritage Air Park.</p>

PITT MEADOWS BC

CYPK



REF	N49 12 58 W122 42 48 1SW 17°E (2013) UTC-8(7) Elev 12' VTA A5004 LO2 T1 CAP
OPR	Pitt Meadows Aprt Society 604-465-8977 Cert
PF	A-1,2,3,7 C-4,5,6
CUST	AOE/CAN
FLT PLN	
FIC	Kamloops 866-WXBRIEF (Toll free within Canada) or 866-541-4101 (Toll free within Canada & USA)
ACC	Vancouver IFR 604-586-4590/4591; IFR tng flts PPR ctc 604-586-4592
WX	LAWO 15-07Z±
SERVICES	
FUEL	100LL (Cardlock) Helis not auth South Side Fuel Facility unless dollied, JA-1 (by truck)
OIL	All
S	1,2,3,4,5
PVT ADV	Pitt Meadows Aviation (by truck) 778-808-3312 1630-2359Z± Mon-Fri exc hols, O/T call out chg; Aeroclub of BC (Cardlock) N & S Side Fuel Facilities 604-465-0446.
RWY DATA	Rwy 08R(080°)/26L(260°) 5003x100 ASPH Thld 08R displ 197' Thld 26L displ 164' Rwy 08L(080°)/26R(260°) 2485x75 ASPH Rwy 18(185°)/36(005°) 2484x75 ASPH RESA: 08R/26L 492'
RWY CERT	Rwy 08R/26L AGN IIIA Rwy 08L/26R AGN I Rwy 18/36 AGN I
TWY CERT	Twy: D, E, F, G AGN I
APRON	Apron I Itinerant prkg N of ATB, E of Twy A (see sketch). Apron III and V Pvt.
RCR	Twr 604-465-9723 PLR/PCN Rwy 08L/26R no win maint

BRITISH COLUMBIA

AERODROME / FACILITY DIRECTORY

PITT MEADOWS BC (Cont'd)

CYPK

HELI DATA	Parking Pad 1 & 2: TLOF 68' dia ASPH Max heli overall length 57'. Day use tkof/lgd & prkg, night use prkg only. Parking Pad 3: TLOF 50' dia ASPH Max heli overall length 42'. Day use tkof/lgd & prkg, night use prkg only.
LIGHTING	08R-AO(TE ME) P2, 26L-AO(T ME) P2, 18-(TE ME), 36-(TE ME), 06-14Z± O/T ARCAI-126.3 key mic 3 times within 5 sec for 26L, & 5 times within 5 sec for 08R & 7 times within 5 sec for 18-36 for 15 min duration lgt.
COMM	ATIS 125.0 1-877-517-2847 15-07Z± GND 123.8 15-07Z± TWR Pitt 126.3 (V) 15-07Z± (emerg only 604-465-9723) MF ttc 126.3 07-15Z± 3NM 2500 ASL (CAR 602.98)
NAV	VOR YPK 112.4 N49 12 57 W122 42 54 (44')
PRO	<p>Rgt hand circuits Rwy 08R, 18 & 26R (CAR 602.96) circuit hgt 1000 ASL. Seaplane circuits 500 ASL on S side of Fraser River. Procedures for crossing the southern Strait of Georgia within Tml Class C airspace refer to Vancouver Intl, VTPC for Crossing the Southern Strait of Georgia.</p> <p>ATS REQUIREMENTS:</p> <p>All VFR acft arriving, departing or transiting the Vancouver or Victoria Tower Class C or D airspace require a transponder code.</p> <ul style="list-style-type: none">- All acft departing Vancouver or Victoria Intl (including Water Aerodrome) call Kamloops FIC at 866-541-4101 or PAC RDO 122.5 or 123.15 for code assignment at least 30 min prior to flight or file a VFR Flight Plan/Flight Iinerary.- All acft arriving Vancouver Intl (including Water Aerodrome) or transiting Vancouver or Victoria Control Zones obtain a code from one of the following ATS units: Vancouver Harbour, Nanaimo, Victoria Harbour, Boundary Bay, Langley, Abbotsford or Pitt Meadows, or call Kamloops FIC at 866-541-4101 or PAC RDO 122.5 or 123.15.- All acft arriving Victoria Intl from a non NAV CANADA site call Kamloops FIC at 866-541-4101 or PAC RDO 122.5 or 123.15 for code assignment at least 30 minutes prior to flight or file a VFR Flight Plan/Flight Itinerary. <p>NIGHT RESTRICTIONS:</p> <ul style="list-style-type: none">- Circuit tng Rwy 08R & 08L not auth 05-15Z± PPR.- Circuit tng Rwy 26L, 26R, 18/36 not auth 06-15Z± PPR.- Turbojet, turbofan and turboprop night circuit tng PPR.- All acft avoid overflight of noise-sensitive areas, unless unable due to crosswind limitations, operational/safety considerations, or as directed by ATC. <p><u>When Tower Closed:</u></p> <ul style="list-style-type: none">- Rwy 08R/18/26L Dep: Acft climb rwy hdg to 1000 ASL BPOC. Best Rate of Climb. Avoid flt over built-up areas in downwind and crosswind legs.- Rwy 36 Dep: Left hand circuit. When safe turn left to 1000 ASL BPOC. Best Rate of Climb. Avoid flt over built-up areas in downwind and crosswind legs.- Rwy 08L/26R not to be used when twr is clsd unless rqrd due to operational/safety considerations. <p>HELI:</p> <p>All Turbine Heli: Continuous circuits prohibited unless approved by APM.</p> <p>- Arr/dep: Avoid low flt over built-up areas, unless directed by ATC.</p>
CAUTION	Coyotes in vic of rwys. 160' lit crane 2NM NW of A/D. Quarry blasting ops within 0.6NM radius N49 17 14 W122 39 33 (aprx 4.7NM N of A/D) to 300 AGL. Industrial complex S of 26L apch, do not mistake bldg floodlights for rwy edge lights during low vis conds or ngt ops.